



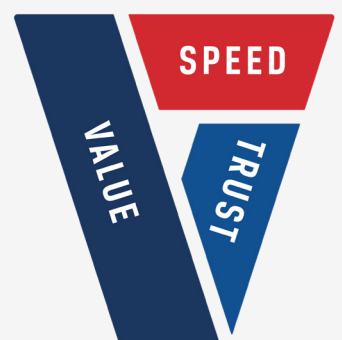
# Local Information

*including Hotels, Restaurants, Shopping,  
Local Attractions and Car Hire information*

---

DAIMLER TRUCKS ADELAIDE

---





# Contents

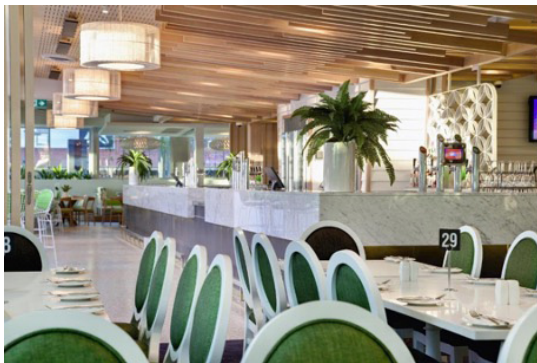
Hotels .....	Page 2
Restaurants .....	Page 4
Shopping .....	Page 7
Local Attractions .....	Page 8
Car Hire Information .....	Page 9

# Hotels

## Walkers Arms Hotel

From a seemingly little thing to one that is simply remarkable. Stop, think about it. The sole patron who enjoyed a rest from the hurry of the day. The friends that haven't been together in over a year. That coffee meeting with a new business. A presentation at a conference that can either make or break one's career. The first visitors to Adelaide. The wedding we'll remember for the rest of our lives. A moment of vital connection. There are moments in time that have the potential to change lives.

---



36 North East Road, Walkerville  
Reservations 08 8344 8022  
Online enquiry [walkersarms.com.au](http://walkersarms.com.au)

## Comfort Inn & Suites Sombrero

Whether you are travelling on business, leisure or attending a special celebration, stay the night at Palms Hotel. Set along the National highway, this upscale motor inn is a 4-minute walk from NorthPark Shopping Centre and 6.5 km from Adelaide Botanic Garden. Free Wi fi, flatscreen TVs and sitting areas are offered in the airy rooms with a subdued decor and wood furnishings. Studio, 1+1-bedroom apartments are fitted with kitchenettes, dining areas and lounges in the form of sofas. Townhouse flats add fully equipped kitchens, separate living rooms and patios.

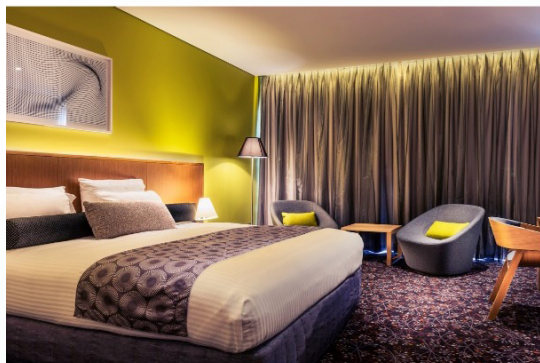
---



290 Main North Road, Prospect  
Reservations 08 8269 3655  
[reception@sombrero.com.au](mailto:reception@sombrero.com.au)

# Adelaide Manor - Ibis Style

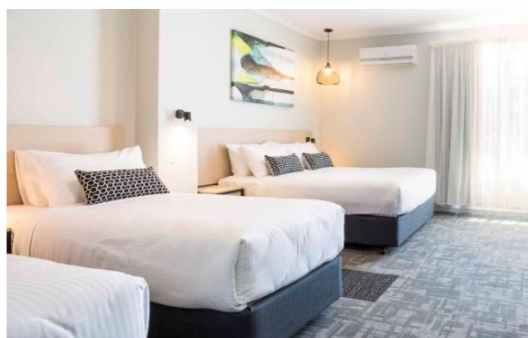
Corporate and leisure accommodation, fine restaurants, conference coordination, special occasion celebrations or weddings are all the specialities of Adelaide Manor's professional catering staff. The event will be trouble free and a package can be customised by their qualified staff. ADELAIDE MANOR is the central point for several tourist destinations and activities. What are you waiting for?



574 Main North Road, Gepps Cross  
Reservations 08 8349 4999  
[reservations@adelaidemanor.com.au](mailto:reservations@adelaidemanor.com.au)

# Finsbury Hotel

The Finsbury Hotel is situated approximately 9 km from the city centre of Adelaide and 10 km from the airport. Within a 15-minute drive, you'll find yourself in the historical Port River suburb of Port Adelaide, home of the Dolphin Cruises, weekend markets, Semaphore Beach, and shopping district. At our doorstep, there's something to entertain everyone! All the facilities of the Finsbury Hotel can be enjoyed by guests of our Nightcap accommodation. Book Today!



49 Hanson Road, Woodville North  
Reservations 08 8345 4781  
Online enquiry [finsburyhotel.com.au](http://finsburyhotel.com.au)

As a valued customer of Daimler Trucks Adelaide, we are offering free transportation to your choice of the hotels in the booklet.

**Please see reception to organise transport.**

# Restaurants

There is a large array of local restaurants/cafes in the surrounding area.  
Transportation available on request - see reception to organise (subject to availability).

## Gao Restaurant

143 Regency Road, Croydon  
0404 657 502  
@ Gao Adelaide

Restaurant  
Dine-in • Takeaway

---

Monday	11:00am - 9:00pm
Tuesday	11:00am - 9:00pm
Wednesday	11:00am - 9:00pm
Thursday	Closed
Friday	11:00am - 9:00pm
Saturday	10:00am - 9:00pm
Sunday	10:00am - 9:00pm

## Miyabi Sushi

44/400 Churchill Road, Kilburn  
0439 998 238  
@ Miyabi Sushi

Restaurant  
Dine-in • Takeaway • Delivery

---

Monday	11:00am - 9:00pm
Tuesday	11:00am - 9:00pm
Wednesday	11:00am - 9:00pm
Thursday	11:00am - 9:00pm
Friday	11:00am - 9:00pm
Saturday	11:00am - 9:00pm
Sunday	11:00am - 9:00pm

# Regency Tavern

225 Days Road, Regency Park  
(08) 8268 6754  
regencytavern.com.au

Pub - Restaurant  
Dine-in • Takeaway

---

Monday	8:00am - 2:00am
Tuesday	8:00am - 2:00am
Wednesday	8:00am - 2:00am
Thursday	8:00am - 2:00am
Friday	8:00am - 2:00am
Saturday	8:00am - 2:00am
Sunday	8:00am - 12:00am

# 127 Days

Shop 7/113-131 Days Road, Croydon Park  
(03) 8346 8205  
@ 127 Days

Burger Restaurant  
Dine-in • Takeaway • Delivery

---

Monday	Closed
Tuesday	11:00am - 2:30pm
Wednesday	11:00am - 2:30pm
Thursday	11:00am - 2:30pm, 5:00pm - 8:30pm
Friday	11:00am - 2:30pm, 5:00pm - 8:30pm
Saturday	11:00am - 2:30pm, 5:00pm - 8:30pm
Sunday	Closed

# Green Papaya Thai Restaurant

379B Churchill Road, Kilburn  
(08) 8260 5046  
@ Green Papaya Thai

Thai Restaurant  
Dine-in • Takeaway • Delivery

---

Monday	Closed
Tuesday	5:00pm - 9:00pm
Wednesday	5:00pm - 9:00pm
Thursday	5:00pm - 9:00pm
Friday	11:30am - 2:30pm, 5:00pm - 9:00pm
Saturday	11:30am - 2:30pm, 5:00pm - 9:00pm
Sunday	11:30am - 2:30pm, 5:00pm - 9:00pm

# Shopping

## Churchill Centre

400 Churchill Road, Kilburn  
(08) 8262 6066

---

Monday	6:00am - 9:00pm
Tuesday	6:00am - 9:00pm
Wednesday	6:00am - 9:00pm
Thursday	6:00am - 9:00pm
Friday	6:00am - 9:00pm
Saturday	6:00am - 5:00pm
Sunday	9:00am - 5:00pm

## Rundle Mall

Adelaide CBD, Adelaide  
(08) 8203 7200

---

Monday	9:00am - 5:30pm
Tuesday	9:00am - 5:30pm
Wednesday	9:00am - 5:30pm
Thursday	9:00am - 5:30pm
Friday	9:00am - 9:00pm
Saturday	9:00am - 5:00pm
Sunday	9:00am - 5:00pm

## Port Adelaide Plaza Shopping Centre

200-220 Commercial Road, Port Adelaide  
(08) 8249 0600

---

Monday	9:00am - 5:30pm
Tuesday	9:00am - 5:30pm
Wednesday	9:00am - 5:30pm
Thursday	9:00am - 9:00pm
Friday	9:00am - 5:30pm
Saturday	9:00am - 5:00pm
Sunday	9:00am - 5:00pm

# Local Attractions

## Regency Park Golf Course

Days Road, Regency Park  
(08) 8268 5753

Open Daily 7:00am - 7:00pm

---

The Regency Park Community Golf Shop can offer you a complete selection of the latest golf equipment, clothing, and accessories from all leading golf brands regardless of your level of play or whether you are playing in beginner to professional. The Random Golf Club Meet for the First time in Adelaide is a great fun and very chill event. With a lot of local business colabs, it's going to be hot!

## Semaphore Beach

Semaphore, Adelaide

Open 24 hours

---

Semaphore's white sands, family-friendly shallows and colourful foreshore make for a classic Adelaide beach escape. After walking the path through the dunes, a wide expanse of white sandy beach leads to the water. Enjoy the expanse of green foreshore – two kilometres of public space preserved for what beach holidays are supposed to be all about. Fun! Ride on the vintage carousel, buy ice creams and fish and chips, cycle on the bike track, and ride on the steam train that puffs along the shoreline.

## Adelaide Zoo

Plane Tree Dr, Adelaide  
(08) 8267 3255

Open Daily 9:30am – 5:00pm

---

Zoo SA is a charity dedicated to connecting humans with nature and saving species from extinction. Zoos SA acknowledges the Country on which we stand always was, and always will be, Aboriginal land and we pay our deepest respect and gratitude to Kurna (Adelaide Zoo) and Ngarrindjeri (Monarto Safari Park) Elders, past, present and emerging.

# Car Hire

If you require a car while your vehicle is being repaired,  
there are car hire companies nearby.

## Access Rent a Car - Adelaide

464 Port Road, West Hindmarsh  
(08) 8340 0400  
accessrentacar.com

---

Monday	8:30am - 5:00pm
Tuesday	8:30am - 5:00pm
Wednesday	8:30am - 5:00pm
Thursday	8:30am - 5:00pm
Friday	8:30am - 5:00pm
Saturday	Closed
Sunday	Closed

**Thank you for visiting Daimler Trucks Adelaide**

We hope to see you again soon

